



BEDFORD RIVER FESTIVAL
20TH & 21ST JULY 2024

IN ASSOCIATION WITH
GALLAGHER
DEVELOPMENTS

**FANTASTIC
FREE FUN
FOR THE WHOLE
FAMILY**

EVENT PROGRAMME



BEDFORD
BOROUGH COUNCIL

Contents



Interactive Contents

Click on a heading to view the page

Welcome to the 2024 Bedford River Festival!	3
River Activities: Main River	5
Russell Park	8
St. Mary's Gardens: Family Island	11
Mill Meadows	14
River Activities: Water Sports Arena	20
Green Earth Village	21
Sports Island	25
The Embankment	27
Bedford High Street	29
Bedford Festival of Motoring	30
Site Map	31
Accessible Site Map	32
River Festival Memories	33
Food & Drink	36
Getting to the Event	38
Sponsors & Partners	42
Finding out more...	44



Welcome to the 2024 Bedford River Festival!



Welcome to the programme for this year's Bedford River Festival!

How can I possibly sum up the River Festival in just a few words? I know that so many of you will be delighted to be back here again, at one of the most beloved events on the calendar, a two-day bonanza that showcases so much of what's great about our town and our Borough.

As always, there are new delights to go with established favourites. I'm sure that like me, you'll discover returning attractions that you've missed in previous years – there really is so much to see and do.

There is even more entertainment for families with young children this year, we are excited to have a new family area in St. Mary's Gardens. The area will have a full two-day programme of activities and workshops. This area will also include our colleagues from our Special Educational Needs and Disabilities (SEND) team, following their successful attendance at the 2022 event.

The 2024 Embankment Stage will be programmed by the Bedford Music Hub, a group of organisations such as the BBC, schools, art organisations, and a mix of community and voluntary organisations working together to create joined-up music education provisions. This exciting partnership re-emphasizes the event's history as a community festival that provides a platform for our local children and young people to showcase their talents and skills.

The Vegan Lounge Area which was launched in 2022 has been massively enhanced to take over the whole of Castle Mound. Now renamed as the Green Earth Village, it features a stage which will be programmed and curated by students. Additional children's activities will be performed at the top of the mound.

We are also partnering with the National Farmers Union to showcase some of the amazing machines used in the agricultural industry. Another partnership we have formed, is with Sue Ryder to deliver the dragon boat experience for this year's festival. As well as providing additional participation in this time-honoured treat, it gives the charity a platform to highlight its good work.

And we have a dedicated area, next to the lock in Mill Meadows, to showcase local artists with an exciting mix of displays, performances, installations, and interactive workshops.

Across the site there will be a great range of free activities and entertainment, including storytelling, workshops, a petting farm and bushcraft demonstration on the Family Island, the beautiful display of cars in the Festival of Motoring, the Green Earth Kids area on top of Castle Mound, the 'CODE' outdoor theatre show in Harpur Square, all the river displays, the workshops and exhibitions on the Arts and Culture Island, all the trade and promotional stalls with some having interactive content, and of course all the performance stages... to name but a few!

All of that, and the weekend is free to attend. Thanks go to every single member of the dedicated team at Bedford Borough Council who have made this year's festival possible – as they do with so many events throughout the year. It's so wonderful to see all the new free activities they've been able to bring this year for families to enjoy.

Thanks too, to all the sponsors and partners for the event. Their help is vital in helping us deliver this great event which always puts Bedford on the map.

We hope you will find that this River Festival offers something for everyone, and that you can join us for the weekend of July 20 and 21 for what I believe will be the best Bedford River Festival yet. Enjoy!



Tom Wootton
Elected Mayor and Leader of Bedford Borough Council

GALLAGHER

DEVELOPMENTS

ALWAYS SEEKING NEW OPPORTUNITIES

Over 60 years experience in the field.

Our team has delivered over 150,000 homes and 10 million square feet of Commercial and Retail property.

We are looking to acquire land with development potential nationwide.

We have the ability and funding to act quickly and confidentially.

Whether you are seeking an outright sale of your land at a premium or seeking a partner to take your land through the planning process we want to hear from you.

For all enquiries, please call us on

01926 699 699

or email: mail@gallagherdevelopments.com

River Activities: Main River

Sponsored by **Baker Brothers**

BAKER BROTHERS

The soul of the River Festival is the huge range of entertainment and activities taking place that truly bring the River Great Ouse to life and commemorate the opening of the river from Bedford to The Wash in Norfolk in 1978. Whether you want to see the traditional boat parades, the dragon boat & raft races, or the daring stunts in the Water Sports arena, there is plenty to keep the family entertained right across the festival weekend. These activities take place along the entire length of the festival site, from St. Mary's Gardens to the Sports Island, so there will always be something to see on the water wherever you are. This year's river activities are kindly sponsored by [Baker Brothers](#).

The cruiser and narrowboat enthusiasts who attend provide the centrepiece to the weekend's celebrations, with many taking part in the Grand Parade of Cabin Cruisers and Grand Parade of Narrowboats which take place on both Saturday and Sunday. The Saturday night finale will be the fantastic Illuminated Boat Parade. Make sure to keep an eye out for the always amazing Jet Boots Bob.

Working with Sue Ryder, the Dragon Boat Races take place on Saturday 20th July and the Raft Races, organised by the Rotary Club of Bedford Park, take place on Sunday 21st July. This year the raft crews will be raising money to support local charities and projects in Bedford – be sure to cheer them on as they compete!



Saturday 20th July 2024: Main River

Time	Activity
12.00pm to 12.15pm	Jet Boots Display (Town Bridge)
12.45pm to 1.00pm	Jet Boots Display (Suspension Bridge)
1.30pm to 1.45pm	Jet Boots Display (Suspension Bridge)
2.00pm to 2.30pm	Grand Parade of Cabin Cruisers
2.45pm to 3.00pm	Jet Boots Display (Town Bridge)
3.45pm to 4.00pm	Jet Boots Display (Suspension Bridge)
4.00pm to 4.30pm	Grand Parade of Narrow Boats
5.15pm to 5.40pm	Jet Boots Display (Town Bridge)
5.30pm to 6.30pm	Stand Up Paddle Board Race
9.00pm to 9.15pm	Jet Boots Display (Suspension Bridge)
10.00pm to 10.30pm	Illuminated Boat Parade

River Activities: Main River *continued*

Sponsored by **Baker Brothers**

BAKER BROTHERS

Sunday 21st July 2024: Main River

Time	Activity
12.00pm to 12.15pm	Jet Boots Display (Town Bridge)
12.45pm to 1.00pm	Jet Boots Display (Suspension Bridge)
1.00pm to 1.30pm	Grand Parade of Cabin Cruisers
1.30pm to 2.00pm	Grand Parade of Narrow Boats
2.45pm to 3.00pm	Raft Race - Heat 1
3.00pm to 3.15pm	Raft Race - Heat 2
3.30pm to 3.45pm	Raft Race - Final
4.00pm to 4.15pm	Jet Boots Display (Suspension Bridge)
5.00pm to 5.15pm	Jet Boots Display Finale (Suspension Bridge)



Saturday 20th July 2024: St. Mary's Gardens

Time	Activity
11.30am to 2.30pm	Dragonboat Race Heats
3.00pm	Dragonboat Race - Semi Final 1
3.10pm	Dragonboat Race - Semi Final 2
3.30pm	Dragonboat Race - Final

Sunday 21st July 2024: St. Mary's Gardens

Time	Activity
11.00am to 2.00pm	Raft Preparation
2.20pm	Rafts proceed to Start Line (opposite Castle Mound)
4.00pm to 4.10pm	Rafts return



**Saturday 7
September
2024**

Bedford 10k and 5k

Join Team Sue Ryder at the Bedford Running Festival!

Run 5 or 10k at the Bedford Running Festival and help us be there when it matters. Joining Team Sue Ryder means that you are helping make sure that everyone approaching the end of life or living with grief can access the support they need.



**For more information
visit: sueryder.org/bedford**



**Because no one
should face death
or grief alone**

Sue Ryder is a charity registered in England and Wales (1052076) and in Scotland (SC039578).
Created in RightMarket - 7/5/2024 - 20:09:42

Russell Park



Sponsored by **The Harpur Centre**

Russell Park features River Festival’s Main Stage, sponsored by [The Harpur Centre](#), which will bring you top performances from a wide range of bands and musicians throughout the weekend. If having a dance and soaking up the festival atmosphere appeals to you, then Russell Park is the place to be.

The ever-popular craft & gift marquee will now be found in Russell Park bringing in unique sellers from across the country.

New for this year will be the Back British Farming NFU Area, set up by the National Farmers’ Union gives you an insight into food and farming in the local area. The area will feature tractors, crops and other farm resources. It is an opportunity to talk to farmers, Young Farmers, Beds Police Rural Crime team and Shuttleworth College.

At the back of Russell Park you will also find a large picnic area, crazy golf course and the amazing play area which includes a section where all equipment is inclusive. The crazy golf and play area are open all year round, not just at the festival.

There is also entertainment for the kids, including giant inflatable slides and traditional fairground rides.

The main stage content has been selected by our partners at The Pad Presents and the local live music venue Esquires.



Saturday 20th July 2024: Main Stage

Time	Performer
11.00am to 11.45am	Bedford Rock Choir
12.00pm to 1.00pm	Fight Klub
1.00pm to 1.30pm	Sunsinger & The High Seas (Folk) https://www.youtube.com/watch?v=DffNvOYSon0
2.00pm to 2.30pm	Balter (Indie) https://www.youtube.com/watch?v=XZPXAtZnUM
3.00pm to 4.00pm	Mr Griff (Funk & Soul) https://www.youtube.com/watch?v=GsiNPDIM7Zo
4.30pm to 5.30pm	The Pride (Reggae & Ska)
6.00pm to 7.00pm	The Brass Funkeys (Brass Covers) https://www.youtube.com/watch?v=Cp6kw46Kc9g
7.30pm to 8.30pm	Henge (Crazy Prog-Rave) https://www.youtube.com/watch?v=YSPUfkxCYMc
9.00pm to 10.30pm	Ultimate RnB (RnB) https://www.youtube.com/watch?v=byVk1pIHFKE



Russell Park *continued*



Sponsored by **The Harpur Centre**

Sunday 21st July 2024: Main Stage

Time	Performer
11.00am to 11.45am	The Collaboration Choir
12.00pm to 12.45pm	Song Squad
1.00pm to 1.30pm	Duzzy Avocado (Country)
2.00pm to 2.40pm	The Zipheads (Rock & Roll / Rockabilly) https://www.youtube.com/watch?v=-ejkYo00ufc
3.10pm to 4.00pm	The Life of Riley (Irish Folk / Pop)
4.15pm to 5.00pm	The Beatles Dub Club (DJ with Beatles Dance Mash Ups)
5.30pm to 6.15pm	RSVP Bhangra (Upbeat Bhangra Bangers) https://www.youtube.com/watch?v=dBAIY9wayFw
6.45pm to 8.00pm	The Marley Experience (Reggae) https://www.youtube.com/watch?v=dAJiAT87hAg



The Bedford College Group is proud to be sponsoring the Bedford River Festival 2024.

Come and visit us in Russell Park and St Mary's Gardens or get involved in one of our challenges in the Sports Island.

You can cheer our teams on as they compete in the Dragon Boat Racing and the Raft Race.

The Bedford College Group, helping individuals, communities and society flourish through education.





CAREER POWERED EDUCATION

DEGREES POWERED BY INDUSTRY KNOW-HOW

Apply at beds.ac.uk



University of Bedfordshire



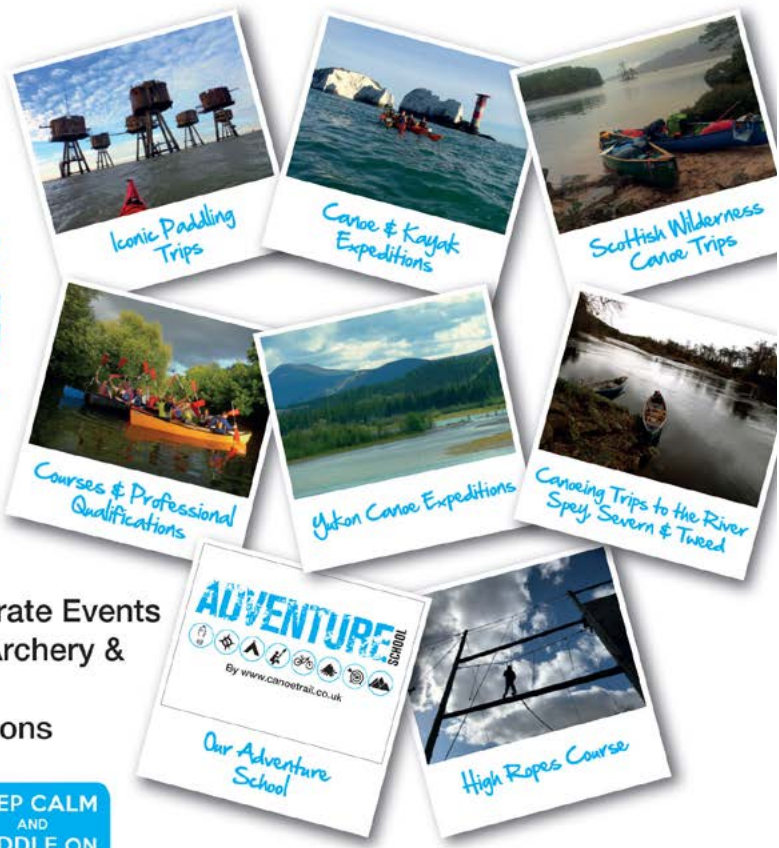
CANOE TRAIL

www.canoetrail.co.uk

CANOE | KAYAK | STAND UP PADDLE BOARD
WILD CAMPING | ADVENTUROUS ACTIVITIES

Develop Your Adventurous Side
with Canoe Trail...

- Canoe, Kayak & SUP Hire
- Wild camping at Matchstick Wood
- Multi Day Trips & Bushcraft Skills
- Kids Parties, Stag/Hen Do's & Corporate Events
- Climbing Wall, High Ropes Course, Archery & Airgun Ranges
- British Canoeing & 1st Aid Qualifications
- Canoe & Kayak Expeditions



KEEP CALM
AND
PADDLE ON

T: 07934 861692 E: admin@canoetrail.co.uk www.canoetrail.co.uk

St. Mary's Gardens: Family Island

Sponsored by **Bedford College**



The River Festival site expanded into St. Mary's Gardens in 2018 to create a chill-out zone perfect for those seeking a quieter side to the festival. In 2024 this area is kindly sponsored by [Bedford College](#) and it will be bursting with family friendly activities. For the first time, we are introducing a Family Island to the site, which will boast a packed programme of children's workshops from dance, storytelling, sensory activities, arts, crafts, fun science and interactive shows brought to you by some fantastic children's entertainers and practitioners. Aimed at tots to teenagers, we can't wait to bring some exciting entertainment and create lasting memories this summer!

Workshops are free to attend, but spaces on some of the workshops will be limited, so you will need to arrive early to secure a place. If you happen to miss out, don't worry, children will be surrounded free entertainment in this area of the site, such a clay making throughout the weekend and a petting zoo.

SEND Family section will also be on family Island. This 'Inclusive Island' will be cordoned off and will have a shaded area with sensory equipment as well as a dedicated bouncy castle for children and young people with Special Educational Needs and / or a Disability (SEND). The area will be manned by staff from various services that support children and young people with SEND and their families and they will be on hand to answer any questions you may have or to share information about events, clubs and activities that may be suitable for you or your family. There will also be a mobile changing place toilet available at the site and it is close to plenty of disabled parking as well as stalls from the NHS and other family friendly activities. Find out more about the Bedford Local Offer and the Summer of SEND [here](#).

The ever popular Adventure Village will also make a triumphant return, with local activity providers [Canoe Trail](#) putting on an array of exciting problem solving, outdoor adventurous activities.

This will include bushcraft demonstrations, axe throwing and a climbing wall amongst other things.

St. Mary's Gardens is also the best place to watch the Dragonboat Races from!

On the other side of the river, Riverside Square will feature a static display of unique vehicles presented by the Festival of Motoring.



St. Mary's Gardens: Family Island *continued*

Sponsored by **Bedford College**



Saturday 20th July 2024: Children's Workshop Tent

Time	Company	Activity
10.00am to 11.45am	Marta Plizga	Arts Workshops
12.00pm to 12.30pm	Little Science Lab	Become a little scientist with hands-on dry ice experiments!
1.00pm to 2.00pm	Art School	Tie Dye
2.15pm to 2.45pm	Little Science Lab	Become a little scientist with hands-on dry ice experiments!
3.00pm to 4.00pm	Art School	Easel Art
4.00pm to 5.00pm	Art School	Foam Show / Water Painting / Bubble Show

Saturday 20th July 2024: Children's Activity Tent

Time	Company	Activity
10.00am to 10.45am	Imajica Theatre	Immersive and interactive musical storytelling and sensory experiences with sign language
11.00am to 11.45am	Exploring Colours with Kaye Leidoskope	Explore the colours of the rainbow in this lively and lovely interactive storytelling session for under 5s
12.00pm to 1.00pm	Taleshakers	Interactive performances, storytelling and baby rave
1.00pm to 2.00pm	Superhero Shenanigans with Kaye Leidoskope	'Superhero Training Academy' - an interactive session full of dress up, crafts and total superhero shenanigans
2.00pm to 2.45pm	Imajica Theatre	Immersive and interactive musical storytelling and sensory experiences with sign language
3.00pm to 3.45pm	Desiree Bashi	Multi-lingual storytelling and dance
4.00pm to 5.00pm	Taleshakers	Interactive performances, storytelling and baby rave

Sunday 21st July 2024: Children's Workshop Tent

Time	Company	Activity
10.00am to 11.45am	Marta Plizga	Arts Workshops
12.00pm to 12.45pm	Little Science Lab	Become a rocket designer and send your creations into orbit using an air pressure cylinder!
1.00pm to 2.00pm	Art School	Tie Dye
2.15pm to 3.00pm	Little Science Lab	Become a rocket designer and send your creations into orbit using an air pressure cylinder!
3.15pm to 4.00pm	Art School	Easel Art
4.00pm to 5.00pm	Art School	Foam Show / Water Painting / Bubble Show

Sunday 21st July 2024: Children's Activity Tent

Time	Company	Activity
10.00am to 10.45am	Exploring Colours with Kaye Leidoskope	Explore the colours of the rainbow in this lively and lovely interactive storytelling session for under 5s
11.00am to 11.45am	Desiree Bashi	Multi-lingual storytelling and dance
12.00pm to 1.00pm	Taleshakers	Interactive performances, storytelling and baby rave
1.00pm to 2.00pm	Superhero Shenanigans with Kaye Leidoskope	'Superhero Training Academy' - an interactive session full of dress up, crafts and total superhero shenanigans
2.30pm to 3.00pm	Cheryl Green	Laughter Yoga
3.00pm to 3.45pm	Desiree Bashi	Multi-lingual storytelling and dance
4.00pm to 5.00pm	Taleshakers	Interactive performances, storytelling and baby rave



Join us for a summer of great events & activities!

<https://localoffer.bedford.gov.uk/summerofsend>



SCAN ME



EliteLawSolicitors

OUR SERVICES:

- Clinical Negligence
- Commercial Property
- Dispute Resolution
- Employment Law
- Family Law and Divorce
- Immigration
- Legal Costs
- Residential Conveyancing
- Trusts and Probate
- Wills and Lasting Powers of Attorney

OUR OFFICES:

- Amersham
- Bedford
- Brighton
- Ebbsfleet
- Elstead
- Hitchin
- Leighton Buzzard
- Raunds
- St Albans
- Surbiton

Mill Meadows

Sponsored by **The Harpur Trust**



Mill Meadows is a hub of activity during the River Festival, with trade stalls galore and the ever-popular Community Stages showcasing fantastic performances from the community of Bedfordshire. The Community Stage is kindly sponsored by [The Harpur Trust](#).

New for 2024, Mill Meadows will feature a new Arts & Culture area showcasing some of the fantastic local creativity. It will be a creative haven for you to enjoy and participate in a range of activities delivered by local cultural organisations and practitioners. Across both days will be a range of activities across a variety of artforms including music, dance, storytelling, poetry, visual art and crafts. Delivered collaboratively by the Bedford Cultural Partnership.

Try out the Philharmonia's virtual orchestra in their VR headset experience; be inspired by poetry and visual art from The River Project; sit and be entertained in artist-designed seating structures with Bedford Creative Arts; watch storytelling and dance by Ananda Arts or theatre by Full House and The Place. Find out about what's on at BedFringe and The Quarry and meet the University's Heritage Horizons practitioners sharing information about new heritage projects. Sketch riverside scenes with the Bedford Urban Sketchers and experience games, crafts and family activities with medieval themes with Bedford Libraries, Archives Service and The Higgins Bedford with Heritage Bedford. Maybe you can profess the positive things about yourself in a humorous interaction with Permission2 or listen to musicians and DJs programmed by Bedford Music Hub.



This area is especially family friendly with space to participate or just watch the many talents of some of Bedford's creative community.

Mill Meadows also hosts viewing areas for the river and a vast array of trade and promotional stalls, alongside some giant inflatables and water activities.

Lastly, there is plenty of fun to be had at the Giant Funfair on Everard Meadow and the Children's Funfair on Mill Meadows – perfect for thrill-seekers both big and small!

Mill Meadows *continued*

Sponsored by **The Harpur Trust**



Saturday 20th July 2024: Community Stage

Time	Performer
11.00am	Danny Matcham Self taught DJ specialising in Tech House / Trance music.
11.25am	The Magpies The Magpies are a four piece made up of vocals, keys, bass, and sax. They will be doing some interesting covers and a couple of original songs. https://youtu.be/mQUCT9yXS7E
12.00pm	Bedfordshire Woodwind Academy Flute Ensemble BWAFF is an award-winning group of amateur flautists, bringing together piccolo, concert flute, alto, bass and contrabass. https://www.facebook.com/bedfordshireflutes
12.25pm	Lily James Lily is a compelling country / folk singer-songwriter. The heartfelt lyrics and melodies can be heard in her latest album, 'The Austin Experience', which she collaborated on with Gabriel Rhodes over in Austin, Texas. www.lilyjamesmusic.co.uk
1.00pm	Donna Samuels Donna Samuels is a vibrant Singer of Vintage Pop, 60s/80s, Disco, Soul and country at local and UK Events and always gets the party started! https://www.facebook.com/donnasamuelssinger
1.25pm	The Barrys The Barrys are a 4-piece folk/acoustic punk band from Bedford. Guitars. Cajon. Fiddle. Harmonica. Upbeat songs about modern life. You can check out their debut single Gutters & Skylines. https://www.facebook.com/werethebarrys/
2.00pm	Stagecoach Bedford Performing Arts School Showcasing CLASH: A girl who attends her dream dance school as a ballet / contemporary dancer but falls in love with other styles, along with finding love with a rival dancer from the hip hop world.
2.25pm	Black Ridge Band Black Ridge is a youth rock band based in Bedford, known for their engaging performances and cohesive sound. While their original compositions are gaining traction, they remain committed to delivering impactful renditions of rock classics. https://www.facebook.com/theblackridgeband/
3.00pm	Bedford Marianettes Bedford Marianettes are a musical theatre group - their next show is 'Fame the Musical', 14th to 17th August 2024. https://www.facebook.com/Marianettes
3.25pm	Flamin' Wet Gurus Reggae, drum n bass, folk n funk, brass, percussion n harmonies. https://www.facebook.com/flaminwetgurus
4.00pm	Chris Cleverley A true guitar-man, his elaborate alternate tunings, percussive rhythms and ambient sound design flow beneath a visceral lyrical style inspired by the lo-fi American Greats, Elliott Smith & Sufjan Stevens. https://www.youtube.com/watch?v=HlFnwJbsmG8

Mill Meadows *continued*

Sponsored by **The Harpur Trust**



Saturday 20th July 2024: Community Stage

Time	Performer
4.25pm	Devil's Mojo Devil's Mojo are a well-established, local band playing a great variety of pop & rock covers guaranteed to get everyone up dancing & singing along! https://www.facebook.com/devilsmojorock
5.00pm	Aththayanake Dance Group A fusion of various traditional dances of Sri Lanka.
5.25pm	Roxze & FiveFiveSix Groove, funk, and rock & roll. FiveFiveSix fronted by soulful vocalist Roxze. Popular covers with feel good originals. Instagram: @roxze__
6.00pm	Bedford College Performing Arts The talented Level 3 Musical Theatre students from Bedford College are proud to perform a medley of songs from some of theatre's best-loved musicals. Instagram: @bedcollarts
6.25pm	SK & The Kings SK & The Kings are a genre-bending powerhouse. Fronted by incredible vocalist and songwriter SK; their music seamlessly blends the energy of Jazz, the smooth grooves of R&B, the depths of Soul and the catchiness of Pop. Instagram: @skandthekings
7.00pm	Bedford Bandhan Indian folk dance.
7.25pm	Tolani Tolani is an Afrobeat artist from Nigeria based in the UK. His sound is an infusion of traditional afrobeat rhythms with hip hop bounces laced with true stories straight from Nigeria. Instagram: @iamtolanii
8.00pm	Joe Bygraves Pop singer-songwriter from Bedford. Previously opened for Paloma Faith, Jools Holland and Ronan Keating. https://joebygraves.com/
8.25pm	Bhangra Smash Up This is not no regular drumming 'dhol' band, they can guarantee that, once the Bhangra Smash Up take the stage with their electrifying dhol beats, with the sounds of the dholki and snare fusing with mainstream music to create the ultimate smash up experience! https://youtu.be/f-tOx2bYX3Y?si=-2h5tSBuv8ddTSxf



Mill Meadows *continued*

Sponsored by **The Harpur Trust**



Sunday 21st July 2024: Community Stage

Time	Performer
11.00am	<p>Fundamentalz Dance</p> <p>Students from specialist street dance school Fundamentalz Dance will perform competition sets alongside a new piece created for especially for the River Festival. Instagram: @fundamentalzdance</p>
11.25am	<p>Stalkers</p> <p>An up-and-coming teen rock band based in Bedfordshire. Some of the venues we have rocked include Bedford Esquires, The Cellar Bar Bedford, and The Stables MK. Come watch us for a set of classics, attitude, and good times! Instagram: @stalkerstheband</p>
12.00pm	<p>Bedford Academy</p> <p>Student dance group. Instagram: @bedacadpa</p>
12.25pm	<p>Sandy Ukulele Group</p> <p>The Sandy Ukulele Group plays a mixture of light blues, pop and rock music from 1950s to 2000s. www.sandyukulelegroup.com</p>
1.00pm	<p>Arabia Belly Dancing Group</p> <p>Arabia is a belly dance group from Bedford who wear colourful costumes and like to perform choreographies to both traditional and modern music.</p>
1.25pm	<p>Dani Elle</p> <p>Dani Elle is a singer-songwriter whose music is a journey of raw emotions and heartfelt storytelling. With a knack for crafting honest and soul-stirring lyrics drawn from her own experiences. www.dani-elle-music.com</p>
2.00pm	<p>Bedford Fight Klub</p> <p>Fight Klub is the high intensity fun workout that makes getting into shape an addiction. www.fightklub.co.uk</p>
2.25pm	<p>Freddies Barnet</p> <p>Acoustic folk, shanty and singalong. https://www.facebook.com/freddiesbarnetmusic</p>
3.00pm	<p>BigJohny Da Talkative</p> <p>Nigerian Creative who has been doing comedy and hosting events since 2015. He's known for his relatable jokes which span across family, morals, societal development, Africans and culture shocks as experienced in the UK. Instagram: @bigjohnydatakative</p>
3.25pm	<p>Roll Cage</p> <p>Funk jazz rock band.</p>
4.00pm	<p>Mizz-C</p> <p>Mizz-C possesses an ability to captivate audiences by showcasing her talent, delivering performances across a diverse array of musical genres. Instagram: @mizz_cassie_</p>
4.25pm	<p>Dogs! Teeth!</p> <p>A frothing hotpot of alternative punk, Dogs! Teeth! are described as a cross between Nirvana and The Prodigy. Dirty guitars & primal beats. Instagram @dogsteethband</p>



**Sundays from 3pm to 5pm
Mill Meadows Bandstand
The Embankment, Bedford**

Music in the Meadows

The Summer Bandstand Concerts return to the Embankment Bandstand this August.

Come along, bring the family & a picnic and enjoy two hours of traditional bandstand music...

4 th August 2024	Bedford Town Band
11 th August 2024	May Blossom
18 th August 2024	Mainline Big Band
25 th August 2024	Fynnius Fogg (2pm to 5pm)



Bands on the Bridge at the Bedford River Festival

If you enjoy the Music in the Meadows Concerts, then join us on Town Bridge on Saturday 20th & Sunday 21st July...

Saturday 20 th July 2024	11.00am to 12.30pm	Northampton Concert Band
	1.30pm to 3.00pm	Ukulele Bedford
	4.00pm to 5.30pm	Bedford Concert Brass
	6.30pm to 8.00pm	The Also Rans
Sunday 21 st July 2024	11.00am to 12.30pm	Toddington Town Band
	1.30pm to 3.00pm	Sax's Cool Band
	4.00pm to 5.30pm	Milton Keynes Brass



@ events@bedford.gov.uk
www.bedford.gov.uk

www.twitter.com/BedfordEventsUK
@BedfordEvents @Bedford Events



HARPUR CENTRE

WHSmith

Boots

PANDORA

PRIMARK

GREGGS

PUTT PUTT NOODLE

Specsavers

TESCO



energie Fitness where you belong

HARPURCENTRE.CO.UK

Proud sponsors of the Riven Festival

Bedford's premier shopping centre

Open seven days a week with over 30 stores trading across two levels

Free Wi-Fi throughout the Harpur Centre, new toilet facilities & free parking on Sundays



Jewson.co.uk

River Activities: Water Sports Arena

Sponsored by **Baker Brothers**

BAKER BROTHERS

The Water Sports Arena, run by [Canoe Trail](#), is right next to the Sports Island, where you can see daring canoe ramp demonstrations and take part in fun water-based activities such as zorbing, Stand Up Paddleboarding (races and taster sessions), cardboard box racing, duckie raft race and much more.

Saturday 20th July 2024: Water Sports Arena

Time	Activity
10.00am to 5.00pm	Stand Up Paddleboard 'Come & Try' Sessions all day
10.30am to 12.30pm	Charity Competitions - Raft Racing, Stand Up Paddleboard Race, & Cardboard Box Race
11.30pm to 5.00pm	Tandem Kayaks Taster Sessions
12.00pm to 12.30pm	Big Air Ramp Demo
1.00pm to 2.30pm	Duckie Raft Race and Team Activities
2.00pm to 2.30pm	Big Air Ramp Demo
3.00pm to 5.00pm	Schools Competitions - Raft Racing, Stand Up Paddleboard Race, & Cardboard Box Race
4.00pm to 4.30pm	Big Air Ramp Demo
9.30pm to 10.00pm	Big Air Ramp Demo
10.00pm to 10.30pm	Glow Stick Parade

Sunday 21st July 2024: Water Sports Arena

Time	Activity
10.00am to 4.30pm	Stand Up Paddleboarding 'Come & Try' Sessions all day
10.30am to 12.30pm	Young Farmers - Stand Up Paddleboard Race & Raft Race
12.00pm to 12.30pm	Big Air Ramp Demo
2.00pm to 2.30pm	Big Air Ramp Demo
2.00pm to 4.30pm	Cubs & Scouts - Stand Up Paddleboard Race & Raft Race
4.00pm to 4.30pm	Big Air Ramp Demo



Green Earth Village



Produced by **Green Earth Café**

Enhancing on the beautiful vegan lounge from the last River Festival, the Green Earth Village will be an eclectic mix of wellbeing, nature, performance, vegan products, food & arts. Produced by our partners at the Green Earth Café.

Come and visit the Eco Forest, and bring the children to the talks and workshops in the Green Earth Kids area.

The Sunrise Stage will give local up-and-coming musicians opportunity to be involved in the River Festival.

Castle Mound has long offered an excellent viewing spot for the various river activities taking place throughout the festival weekend, including the racing and the Illuminated Boat Parade on Saturday evening. Visitors can enjoy the catering options on offer or bring a picnic.

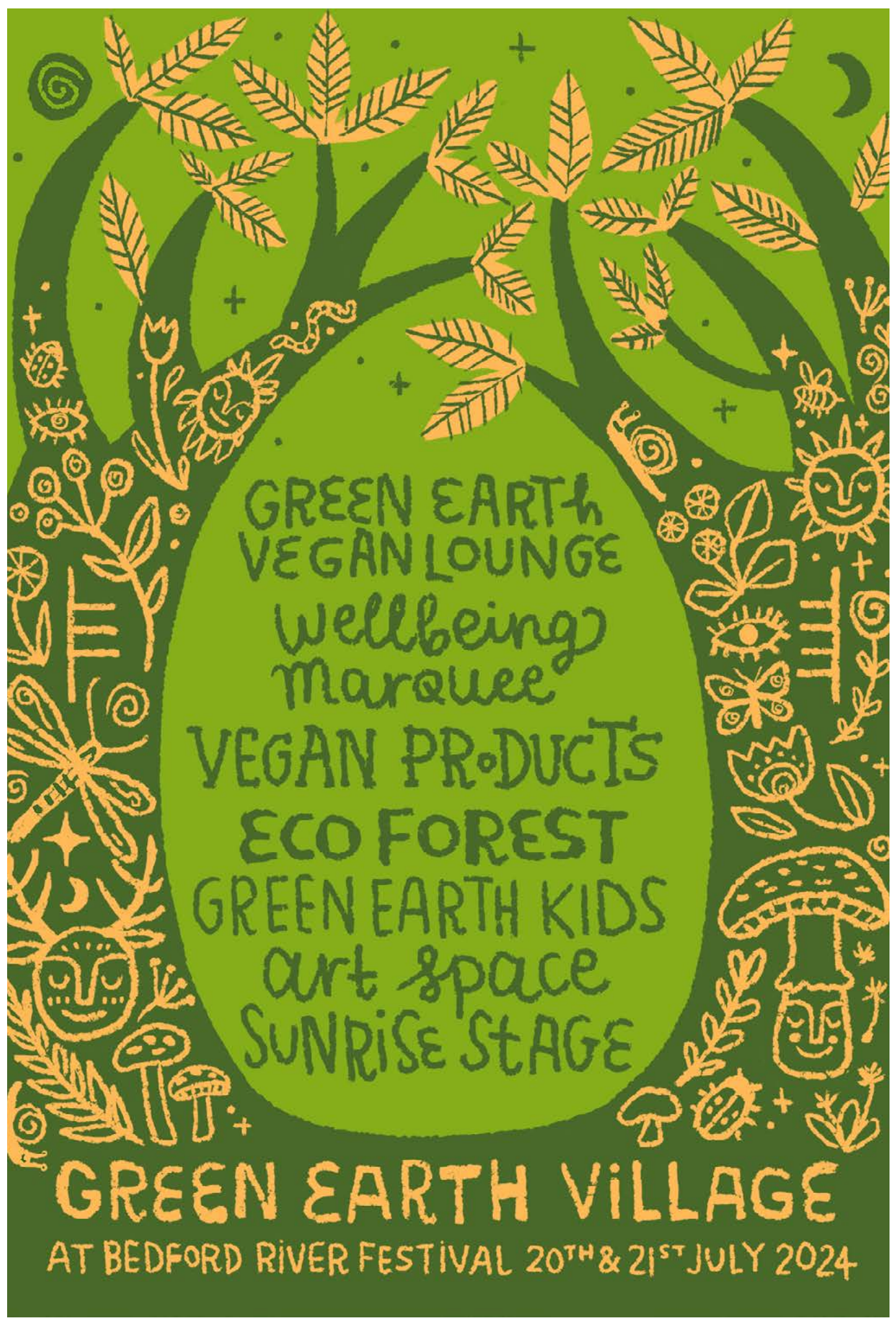
Saturday 20th July 2024: Sunrise Stage

Time	Activity
12.00pm	Loose Change
1.00pm	Jasmia
2.00pm	The Greensands
3.00pm	Hole in the Wall
4.00pm	Elliot Leeson (DJ)
5.00pm	Liv Sommers
6.00pm	Motion
7.00pm	Day Break
8.00pm	Mia and Flipper

Sunday 21st July 2024: Sunrise Stage

Time	Activity
11.00am	Metanoia
12.00pm	Whiplash
1.00pm	Monochrome
2.00pm	Blame Caesar
3.00pm	My Girl The River
4.00pm	Matty Ram
5.00pm	The Tarrows





GREEN EARTH
VEGAN LOUNGE
Wellbeing
Marquee
VEGAN PRODUCTS
ECO FOREST
GREEN EARTH KIDS
Art space
SUNRISE STAGE

GREEN EARTH VILLAGE

AT BEDFORD RIVER FESTIVAL 20TH & 21ST JULY 2024

SATURDAY
11.30am Tin Can Herb Planting
with Young Growers Club
1.30pm Stick Crafts
with The Good Life Garden
3.30pm Seed Bombs
with Young Growers Club

SUNDAY
11.30am Seed Mosaics & Nature Prints
with The Good Life Garden
1.30pm Sow a Salad Garden
with The Good Life Garden
3.30pm Elder Necklaces
with The Good Life Garden

STORIES
Nature themed stories by
Mark Steinhardt will be told
throughout the weekend.
Check out the storytelling tent
for details.

GREEN EARTH KIDS
AT BEDFORD RIVER FESTIVAL 20TH & 21ST JULY 2024

**FROM OUR
FIELDS TO
YOUR FORK**

BACK BRITISH FARMING

www.nfuonline.com

DJT Surfacing Ltd

Highway Maintenance & Civils

- Surfacing • Paving • Ironguard
- Gritting • Gully Cleaning
- Kerbing and Drainage
- Grab Hire • Muck Away Service

For more information contact us on:

01234 376011 info@djtsurfacing.co.uk
www.djtsurfacing.co.uk

Dacca Farm, Ducks Cross, Colesden Road, Wilden, Bedfordshire, MK44 2QW

Sports Island

The Sports Island will feature sporting and martial arts demonstrations, a stage full of action with acrobatics and dance performances, 'have a go' activities and more.

The Sports Island ethos is all about actively encouraging people to have fun and get involved or stay involved in a wide range of physical activity. If you feel like taking up a new sporting activity or revisiting one from your past, then pop along to discover what Bedford has on offer! Local clubs, organisations and gyms will all be in attendance for visitors to find out more.

Saturday 20th July 2024: 'Come & Try It' Arena

Time	Activity
11.30am	Line Dancing (Mike's Line Dancing)
12.00pm	Parkour / Freerunning (Spiral Freerun CIC)
12.30pm	Zumba Class (Better / GLL)
1.30pm	Calisthenics Bodyweight Exercise (The Compound Wellingborough)
2.00pm	Football (Bedford Town Football Club)
2.30pm	Swing Dancing (Swingsters)



Together For Bedford

The Harpur Trust has been providing education and supporting the people of Bedford for nearly 460 years



Our long-term plan, *Together For Bedford*, sees us build on our rich heritage in education and grant giving, by working with the community and local schools to transform the lives of children and young people from across the borough.



www.harpurtrust.org.uk

Sports Island *continued*

Sunday 21st July 2024: 'Come & Try It' Arena

Time	Activity
11.30am	Line Dancing (Mike's Line Dancing)
12.00pm	Parkour / Freerunning (Spiral Freerun CIC)
12.30pm	Swing Dancing (Swingsters)
1.00pm	Football (Bedford Town Football Club)

Saturday 20th July 2024: Sports Stage

Time	Activity
11.00am	UFM Community Dance Club
11.15am	Nritham Dance Academy
11.30am	Kinetic Vibes Dance Academy
11.45am	Swingsters
12.00pm	Inspire Performing Arts
12.15pm	Nritham Dance Academy
12.30pm	Devil's in Dance
12.45pm	Inspire Performing Arts
1.00pm	Mike's Line Dancing
1.15pm	Bedford Kendo Club
1.30pm	Swingsters
1.45pm	UFM Community Dance Club
2.00pm	Inspire Performing Arts
2.15pm	Devil's in Dance
2.30pm	TBA
2.45pm	TBA
3.00pm	Belle Etoile Academy of Dance
3.15pm	TBA
3.30pm	Mike's Line Dancing
3.45pm	Swingsters
4.00pm	Belle Etoile Academy of Dance
4.15pm	TBA

Sunday 21st July 2024: Sports Stage

Time	Activity
11.00am	15 mins Body Attack Class – Better
11.15am	15 mins Grit Attack Class – Better
11.30am	15 mins Body Combat Class – Better
11.45am	Better / GLL
12.00pm	Swingsters
12.15pm	Nritham Dance Academy
12.30pm	TBA
12.45pm	UFM Community Dance Club
1.00pm	Mike's Line Dancing
1.15pm	TBA
1.30pm	UFM Community Dance Club
1.45pm	Nritham Dance Academy
2.00pm	Elements Elite
2.15pm	Elements Elite
2.30pm	UFM Community Dance Club
2.45pm	Fundamentalz Dance
3.00pm	Street Squad & Show Squad
3.15pm	Street Squad & Show Squad
3.30pm	Mike's Line Dancing
3.45pm	Swingsters
4.00pm	VyMy Dance and Fitness
4.15pm	VyMy Dance and Fitness



The Embankment

sponsored by **Brehey Civil Engineering**



Bedford's Victorian Embankment Promenade is often described as 'the jewel in Bedford's crown'.

It becomes a hive of activity during the River Festival when it becomes home to the Festival Market and a multitude of trade stalls, making it the perfect place to peruse a wide variety of both local and regional goods and maybe to pick up a unique souvenir or gift. You can also keep an eye on the various river activities taking place as you stroll along the riverside.

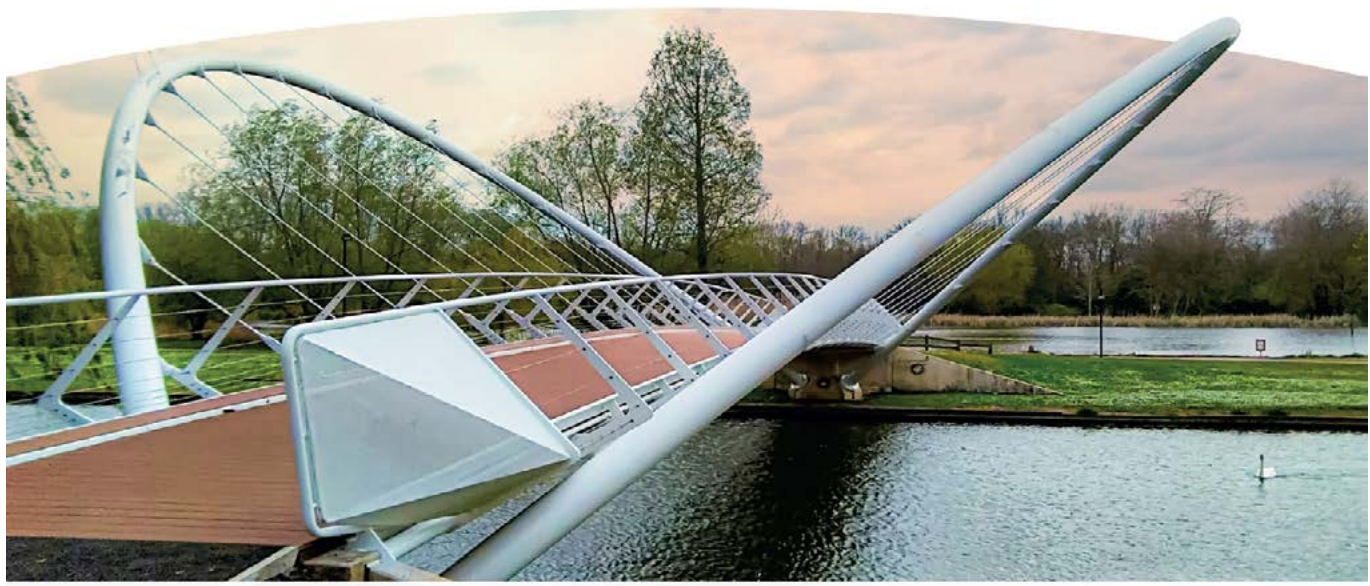
The Embankment is also perfect for viewing the river activities which take place throughout the duration of the Festival, including the various boat parades and thrilling water demonstrations.

New for this year will be the Bedford Music Hub Stage. Working with a number of their partner organisations (including Bedford Music Cooperative, Bedford Town Band, Luma Sounds, Musical Seeds, Philharmonia Orchestra), they will showcase a fantastic array of young local talent: singers, instrumentalists, beatboxers, rappers, DJs and aspiring rockstars.

Creating Musical Pathways - the Bedford Music Hub ensure that all children and young people across Bedford Borough have access to high-quality, inclusive and varied musical experiences and progression routes. For more information please visit the website [here](#).



Building Britain's Infrastructure since 1963



We are experts in **highways and bridges, river and marine, utilities and energy, and environmental sectors.**
Brehey Civil Engineering Ltd (Head Office)
Flordon Road, Creeting St Mary, Ipswich, Suffolk, IP6 8NH

01449 720282
 enquiry@brehey.co.uk
 www.brehey.co.uk



The Embankment *continued*

sponsored by **Brehey Civil Engineering**



Saturday 20 th July 2024: Bedford Music Hub Stage	
Time	Activity
11.15am - 12pm	Rox Vox DJ Dragon Djembe players from Ravensden and Ursula Taylor Primary Schools
12pm - 1pm	Saturday Morning Music Centre Rock Band DJ Kenzie Rox Vox
1pm - 2pm	St. John's School Choir DJ Fabz Blue Flame (Castle Newnham School) Quartz (Bedford Rock School)
2pm - 3pm	DJ Orchestra DJ Jaggy J SLS Band
3pm - 4pm	74 (Bedford Rock School) DJ TJay Balliol Primary School Choir
4pm - 5pm	DJ Rae Rae The Switch (Bedford College) DJ Mickey
5pm - 6pm	Rox Vox DJ Fabz Fusion Choir Petty Theft
6pm - 7pm	DJ TJay Luma Sounds' Youth Dhols Black Ridge (Bedford Rock School)
7pm - 8pm	Luma Sounds' Adult Dhols DJ Guraj

Sunday 21 st July 2024: Bedford Music Hub Stage	
Time	Activity
11.15am - 12pm	Philharmonia Orchestra Wind Quintet with Bedford Music Cooperative Intermediate Wind Band
12pm - 1pm	DJ TJay Girls will be Girls (Bedford Rock School) Putnoe Primary Yr 3 Singers
1pm - 2pm	Bedford Music Cooperative Intermediate Jazz Band DJ Guraj & Rae The Hills Primary School Choir SWLL (Goldington Academy)
2pm - 3pm	DJs from Digital Beats and Goldington Academy DJ Guraj Blackout (Bedford Rock School)
3pm - 4pm	Vocal Beats DJ Fabz Wang (Goldington Academy)
4pm - 5pm	DJ Bedford Monochrome (Bedford Rock School) Burnout
5pm - 6pm	Steel Pan Academy DJ Rae



Bedford High Street

sponsored by **BedfordBID**



Visit Bedford High Street to not only see the wonderful businesses and hospitality options that we have all year round but also to admire the display of the Festival of Motoring.

Successfully debuting at the 2022 Bedford River Festival, the Festival of Motoring wowed the crowds with exceptional vehicles of all ages and types. These will be found not only on the High Street, but also on St. Paul's Square, Riverside Square and on Harpur Square. Remember if you want to see these vehicles in motion then the Festival of Motoring will depart the site at 5pm both days.

New for 2024 will be an physical theatre production of 'Code' in Harpur Square at 12pm and 3pm on both days, more information below.

Town Bridge is known for being an ideal location to view the river activities, and the bridge will also host traditional bands performing in our 'Bands on the Bridge' area. Pull up a chair and relax to some rousing classical tunes performed by some of the best bands in Bedfordshire.

Saturday 20 th July 2024: Bands on the Bridge	
Time	Activity
11.00am	Northampton Concert Band
1.30pm	Ukulele Bedford
4.00pm	Bedford Concert Brass
6.30pm	The Also Rans

Sunday 21 st July 2024: Bands on the Bridge	
Time	Activity
11.00am	Toddington Town Band
1.30pm	Sax's Cool
4.00pm	Milton Keynes Brass

'Code' by Justice in Motion 12pm & 3pm, Saturday and Sunday Harpur Square

The phone vibrates... a message...
times, numbers, deals... and a warning.
All in code. So young and so troubled.
At home, in school, on the street.
There's no way out - is there?

Code, Justice in Motion's urban odyssey into county lines and knife crime, is a spectacular blend of physical theatre, parkour and trials bike stunts with live rap and music. On an urban playground, skilled athletes and performers show what is happening to our young people exploited by organised drug crime gangs.

This story could be happening right now. See inside the county lines through up-close, dazzling, adrenaline-fuelled, audacious storytelling inspired by true case studies.



CODE.

"AN OUTDOOR URBAN ODYSSEY ABOUT COUNTY LINES AND KNIFE CRIME FEATURING PARKOUR, SKATEBOARDING, TRIALS BIKE STUNTS AND LIVE RAP"

JUSTICE IN MOTION | **ARTS COUNCIL ENGLAND** | **101** | **Mill**

FREE - NO BOOKING REQUIRED

Bedford Festival of Motoring

sponsored by **BedfordBID**



There will be hundreds of amazing and unique vehicles on display in Bedford town centre. Here are some examples of what you can expect to see.

Daimler Ferret Armoured Car (below)

Also known as a Scout Car, designed for reconnaissance purposes. Produced between 1952 and 1971 by the UK firm Daimler. Widely used by regiments in the British Army, the RAF regiment and Commonwealth countries.



1904 Ford Model C (above)

One of the oldest and rarest cars in the world. Produced for one year only with varying estimates as to how many were made, somewhere between 800-850. Made in Canada. This model has completed over thirty London to Brighton Runs, tough going at a top speed of 38mph!

Featured Car Clubs

Auto Anonymous

Located in Market Square and along the railings opposite what was Wilko. These will be a mixture of interesting vehicles of all types and ages which are kept very much in their original style/condition.

Fuelled Collective

Located in Riverside Square and either side of its entrance on St. Paul's Square. Many of these vehicles will have been significantly modified: mechanically, bodily or both.

Little & Loud

Located in the covered market stall opposite Bedford Corn Exchange, these are diminutive vehicles, such as the British Mini, some of which will have been modified in imaginative ways!

There will also be a number of commercial and service vehicles. These will enter via the south end of Mill Street and will be located at its northern end. Classic lorries, double decker buses, military scout cars, cold-war G Wagon, Fire Engine, and a Timber Tractor.

At approximately 5pm on both days the Bedford Festival of Motoring Course Motor will lead a cavalcade of many of the featured vehicles through town to where they can head for home. See the cars moving!

Site Map



HEADLINE SPONSOR
GALLAGHER
DEVELOPMENTS



- 7 Bridges (1-14)** (bridges 5 & 8 are not suitable to wheelchair & pushchair users)
- Railway**
- Park & Ride / Bus Points**
- Parking**
- Disabled Parking** (limited spaces available)
- Toilets, Disabled Toilets & Baby Changing**
- Changing Places**
- Funfair & Rides**

- Ice Creams**
- First Aid - St. John Ambulance**
- Bar**
- Stalls & Other Outlets**
- Picnic Area**
- Road closure point**
- Information & Lost Children Point**
- Drinking Water Point**

- 'Blue Lights' Area**
- Eco Forest**
- Green Earth Kids Area**
- Adventure Island**
- Petting Zoo**
- SEND Family Area**
- Farming Zone**
- Food Outlets**



Accessible Site Map

BEDFORD RIVER FESTIVAL | 20TH & 21ST JULY 2024

For more information visit <https://riverfestival.bedford.gov.uk/>



P **♿** FESTIVAL CAR PARKING
Bedford International Athletic Stadium (BIAS) **£7 ALL DAY**
CAUTION WHEN CROSSING THE ROAD
Additional parking is available in Priory Country Park **£5 ALL DAY**

- 1** **Bridges (1-14)**
(bridges 5 & 8 are not suitable to wheelchair & pushchair users so have been taken off this map)
- 🚉** **Railway**
- 🚗** **Park & Ride / Bus Points**
- P** **Parking**

- ♿** **Disabled Parking**
(limited spaces available)
- 🚻** **Toilets, Disabled Toilets & Baby Changing**
- ♿** **Changing Places**
- +** **First Aid - St. John Ambulance**

- X** **Road closure point**
- i** **Information & Lost Children Point**
- 💧** **Drinking Water Point**
- S** **SEND Family Area**

HEADLINE SPONSOR
GALLAGHER
DEVELOPMENTS



River Festival Memories

by **Martyn Pearson, Harbour Master**

My association with the river began in 1976 when I, along with other members of the Bedford 18 Group, part of a then thriving national social organisation for 18-30-year-olds, organised a raft race for other 18-plus groups and a small number of local firms and organisations. This proved to be a highly successful event for both spectators and participants alike and it was not long before enthusiasm for rafting enabled two annual separate events, one for locals and the other for the 18-plus groups with Bedford soon becoming the host town for the National 18-plus Raft Race

In 1978 Bedford Borough Council asked the Group if it could incorporate the annual Bedford Raft Race as it was then known within the river events programme for the forthcoming River Festival to commemorate the opening of the River Great Ouse from Bedford to The Wash. This request was eagerly accepted. I was appointed Race Organiser and became a member of the Bedford River Festival Committee

The Group continued to organise the Festival Raft Races for a number of years before handing over the reins in the mid nineties to The Rotary Club of Bedford Park who are still the driving force behind the present-day raft races.

I however, was 'promoted' in 1982 to the post of River Events Manager / Harbour Master with responsibility for river events plus the administration and mooring arrangements for all visiting boats.

This was at first, a challenging task and involved far more than just making sure that barrel's planks and rafters made their way safely from the Town Bridge to the Suspension Bridge. However, I was determined to build on what already had been achieved and was very appreciative of the assistance of the Bedford Jaycees, a voluntary management training organisation who had been actively involved with the festival from the outset.

Over the years I have seen the festival increase in size and stature and has grown from what seemed at first to be a large village fete to one of the largest community events of its kind in the country.



Since 2018 the event footprint had been enlarged to include St. Mary's Gardens / Riverside Square areas, and since 2022 The High Street and adjacent St. Paul's Square has become the home for the extremely popular Festival of Motoring.

The Bedford River Festival now offers 'something for everyone' with wide ranging musical entertainment from the five music stages located around the site, a tantalizing array of sports showcased in the Sports Island. Outdoor activities are demonstrated in the Adventure Village. Fun for all the family can be found in the St. Mary's Gardens Family Island. Fairground rides are in abundance as are trade and charity stalls plus displays and exhibits from the local commercial sector.

A full programme of river-based activities now include decorated and illuminated boat parades, raft races, dragon boat races, paddle boarding, aqua flyers, plus a dedicated arena for water sports.

Whilst legislation, infrastructure and health & safety requirements have necessitated change since the first festival it has not lost its community spirit. It still involves many clubs' organisations and societies from Bedford and the surrounding areas overseen by the officers and members of Bedford Borough Council the organisers of the event.

River Festival Memories *continued*

by **Martyn Pearson, Harbour Master**

However, it is readily acknowledged that an event of this size could not exist without the financial support of local companies and representatives. It is therefore encouraging that there are still willing volunteers to become sponsors, partners, or friends of the festival.

Former committee chairmen Ron Whittingham and Ron 'Mr River Festival' Sharman, whilst no longer with us, would, I am sure be pleased that their initial efforts, forethought, and vision provided a firm foundation for the festivals of today.

On a personal note, the 1984 River Festival was good for me as I met and worked along side a young lady called Lorrie a Bedford Jaycees radio operator within the festival control office. After comparing rosters, planners and procedures at the 1986 festival, she became my wife in 1987.

During my involvement with the festival there have been many memorable moments I often recall the occasion when The Royal National Lifeboat Institute was giving a display on a stretch of river near the Suspension Bridge which involved an actor falling off the back of a cabin cruiser, the alarm being raised, an inshore lifeboat being launched and a successful rescue by the lifeboat crew.

Three displays were planned; the first two went well, delighting the audiences on both sides of the river bank. Unfortunately, during the third display the actor was observed falling into the river by a member of the public who, it later transpired, had not been watching the proceedings.

The well-meaning visitor thinking a tragedy was about to happen dived into the river (fully clothed) and tried to rescue the actor who promptly told the potential 'hero' that he didn't want rescuing as he was waiting for the lifeboat. On hearing this our 'hero' thought that the casualty was definitely unwell as Bedford does not have a lifeboat and dragged him to the riverbank. This entertained the audience but upset the lifeboat crew as they had no one to rescue.

On another occasion I was asked to assist the local Police by taking the duty sergeant by boat from the mobile Police Station on Mill Meadows to the main Police control unit in Russell Park. Unfortunately, whilst stepping into the boat the keys to the mobile Police Station fell out of the sergeant's pocket into the river.



River Festival Memories *continued*

by **Martyn Pearson, Harbour Master**

Following a few 'words of disappointment' from the Policeman concerned, the local sub aqua club who were assisting with river safety were called and luckily found and retrieved the keys from the bottom of the river, much to the relief of the Police sergeant and the alleged offender located in the station's temporary cell.

As with all major events there is always someone who tries making money unofficially. At one festival we had a trader who turned up and was selling plastic crocodiles. It was about an hour before he was caught and informed that as he did not have a trading permit, he would have to leave the site. Unfortunately, he returned later during the day and was once again spotted. His presence was relayed back to event control via a steward's two-way radio with the words 'the crocodiles are back'. This was overheard by a number of visitors who were close by and resulted in several peering into the river looking for the crocodiles.

I am always appreciative of the support we get for the festival and as Harbour Master it would be remissive of me not to recognise the boating fraternity. Each festival attracts more mooring applications with over 100 boats of differing shapes and sizes now attending. From the outset we have always welcomed members of the Bedford Boat Club and in more recent year's other boat clubs along the River Great Ouse.

The amount of time and effort that goes into decorating and illuminating their boats for the various parades and processions never ceases to amaze me.

The number of Narrow Boats which are normally associated with canals has also steadily increased over the years allowing us to now give them their own parade.

We obviously welcome any publicity for the event, and I can recall Anglia Television carrying out at least two 30-minute live broadcasts from the festival site together with numerous local radio slots and coverage in all the local newspapers. We even once featured in a special local edition of The Mail on Sunday

Having lived and worked in Bedford all my life it has been a great honour and privilege to be associated with the town's premier event for the last forty-six years. It is great event for the community organised in large parts by the community. I sincerely hope that it continues to be so.



Food & Drink

Tickle those Taste Buds!

Across this year's Bedford River Festival site you will find a wonderful selection of food and drink.

With many caterers, including some exclusively selling vegan cuisine, and of course ice cream vans, you should find it easy to find something yummy to chow down on.

There are also 9 festival bars across the event site, to ensure that you can stay hydrated throughout your visit.

The bars provided by 3B1G Events Ltd will be highlighting their environmental credentials and supporting the ethos of the festival by operating a reusable cup scheme. At each bar there will be an area for customers to return their cups should they not wish to continue the cups life by taking it home. Cups returned to the bar will be sterilised in readiness for a future event (there will be a charge for your first cup).

Russell Park

- 3 Festival Bars
- Chicken, nachos and beef burritos
- Caribbean
- Thai
- Turkish
- German sausage
- Chicken
- Burgers and fries
- Vegan and vegetarian Indian curries and street food
- Hog roast

Family Island (St. Mary's Gardens)

- Festival Bar
- Pizza
- Churros

Mill Meadows

- Festival Bar
- Burgers and fries
- Filled Yorkshire Puds
- Greek
- Noodles
- Shawarma
- Chicken
- Chinese
- Donuts and Waffles

Green Earth Village

- Festival Bar
- Vegan salads and roti wraps
- Vegan Focaccias / BLTs / Sandwiches
- Vegan Indian
- Vegan Samosas

The Embankment

- 3 Festival Bars
- Festival Market including Kielbasa sausage, tacos, burritos, Yorkshire pudding wraps, Wok man, Gyros Kebab, Exotic Meat burgers, Katsu Noodles, various sweets treats, and many more
- Greek Indian
- German Sausage
- Mediterranean

Sports Island

- Caribbean
- Lebanese
- Greek





21st & 22nd June 2025

Open 10am to 4pm each day
on Russell Park, The Embankment
& Mill Meadows



- Food & Drink • Vehicle Exhibitions • Kite Flyers & Demonstrations • Vegan Fair • Inflatables • Crafts •
- Traditional Funfair • Watersports • Trade Stalls • Dragon Boats (Sunday) • Bandstand Concerts •

For Trader / Exhibitor / Sponsorship opportunities please contact the Events Team

@ events@bedford.gov.uk

www.bedford.gov.uk/kiteandmotoringfestival

To find out more about this and other activities going on all year round in Bedford's parks please follow one of our digital platforms

- Facebook: @BedfordEvents
- Instagram: @bedfordevents
- X: @BedfordEventsUK



BEDFORD
BOROUGH COUNCIL

Supported by the Town Centre Priority Fund
- a short walk from the event is Bedford
Town Centre, why not give it a visit!

Getting to the Event

Festival Car Parks sponsored by Stagecoach



The Bedford River Festival always draws huge crowds and you are advised to plan ahead and think about how to get here, where to park and how to get around the 105 acre site.

We would like visitors to consider how they travel to the event and where possible use public transport or use other sustainable modes of transport.

Stagecoach will be running extra buses so make it easier for people to get to and from the River Festival, please check their timetables for routes and further information.

By Car

Visitor parking is available at the town centre car parks, and also at Bedford International Athletics Stadium (£7 a vehicle per day) and Priory Country Park (£5 a vehicle per day), both on Barkers Lane - ONLY CARD PAYMENTS WILL BE ACCEPTED. Blue badge holders can park in the Athletic Stadium car park but please be aware that this is a grass field.

Additional car parking for disabled visitors will be available at Longholme Way (MK42 0BX), and in St. Mary's Car Park (in between Borough Hall and Bedford College) Cauldwell Street (MK42 9AP) - a blue badge will be required.

Park & Ride

Elstow Park & Ride (MK42 9XF) will be running an enhanced service during the River Festival weekend. Elstow Park & Ride is located in Progress Park on the A6 - just north of the A6 junction of the A421. Pay on the bus - £2 per person, per journey.

Mowsbury Park & Ride (MK41 8AH) will be running specially for the River Festival. Stagecoach will be operating from Mowsbury Park, this will be a 15 minute service dropping off and collecting from Bedford town centre (River Street). Mowsbury Park is situated to the north of the Bedford and the access for the Park & Ride will be from Kimbolton Road (B660).

Pay on the bus – £5 per adult, £3.50 per child (up to 16yrs), £12 for a family of up to 2 adults & 3 children (including return).

By Bike

A new bike storage shelter has now opened in Bedford town centre, near Harpur Square enhancing the bike racks that are currently there.

To access the shelter, cyclists just need to email highways.helpdesk@bedford.gov.uk with their full name, address in Bedford Borough and phone number. They will then receive details on how to access the unit and will need to download the 'Okey Access' app on their smart phone.



Getting to the Event *continued*

Festival Car Parks sponsored by **Stagecoach**



By Bus

Stagecoach will be running extra busses so make it easier for people to get to and from the River Festival. Please check their timetables for routes and further information at <https://www.stagecoachbus.com/regional-service-updates/east/bedfordshire>.

By Train

[Thameslink](#) and [East Midlands Railway](#) trains come to Bedford train station - please check their websites for timings.

Additional train services will be run on Sunday 21st July between Bletchley and Bedford. For more information please visit the [London Northwestern Railway](#) website.

Sunday 21st July 2024: Bletchley to Bedford

Station	Time	Time	Time	Time	Time	Time
Bletchley	09.40	11.15	12.55	14.45	16.22	17.57
Fenny Stratford	09.43	11.18	12.58	14.48	16.25	18.00
Bow Brickhill	09.47	11.22	13.02	14.52	16.29	18.04
Woburn Sands	09.51	11.26	13.06	14.56	16.33	18.08
Aspley Guise	09.54	11.29	13.09	14.59	16.36	18.11
Ridgmont	09.58	11.33	13.13	15.03	16.40	18.15
Lidlington	10.02	11.37	13.17	15.07	16.44	18.19
Millbrook	10.05	11.40	13.20	15.10	16.47	18.22
Stewartby	10.08	11.43	13.23	15.13	16.50	18.25
Kempston Hardwick	10.12	11.47	13.27	15.17	16.54	18.29
Bedford St. John's	10.18	11.53	13.33	15.23	17.00	18.35
Bedford	10.22	11.57	13.37	15.27	17.04	18.39

Sunday 21st July 2024: Bedford to Bletchley

Station	Time	Time	Time	Time	Time	Time
Bedford	10.28	12.05	13.55	15.35	17.10	18.45
Bedford St. John's	10.32	12.09	13.59	15.39	17.14	18.49
Kempston Hardwick	10.38	12.15	14.05	15.45	17.20	18.55
Stewartby	10.42	12.19	14.09	15.49	17.24	18.59
Millbrook	10.45	12.22	14.12	15.52	17.27	19.02
Lidlington	10.49	12.26	14.16	15.56	17.31	19.06
Ridgmont	10.53	12.30	14.20	16.00	17.35	19.10
Aspley Guise	10.57	12.34	14.24	16.04	17.39	19.14
Woburn Sands	10.59	12.36	14.26	16.06	17.41	19.16
Bow Brickhill	11.04	12.41	14.31	16.11	17.46	19.21
Fenny Stratford	11.06	12.43	14.33	16.13	17.48	19.23
Bletchley	11.09	12.46	14.36	16.16	17.51	19.26

Getting to the Event *continued*

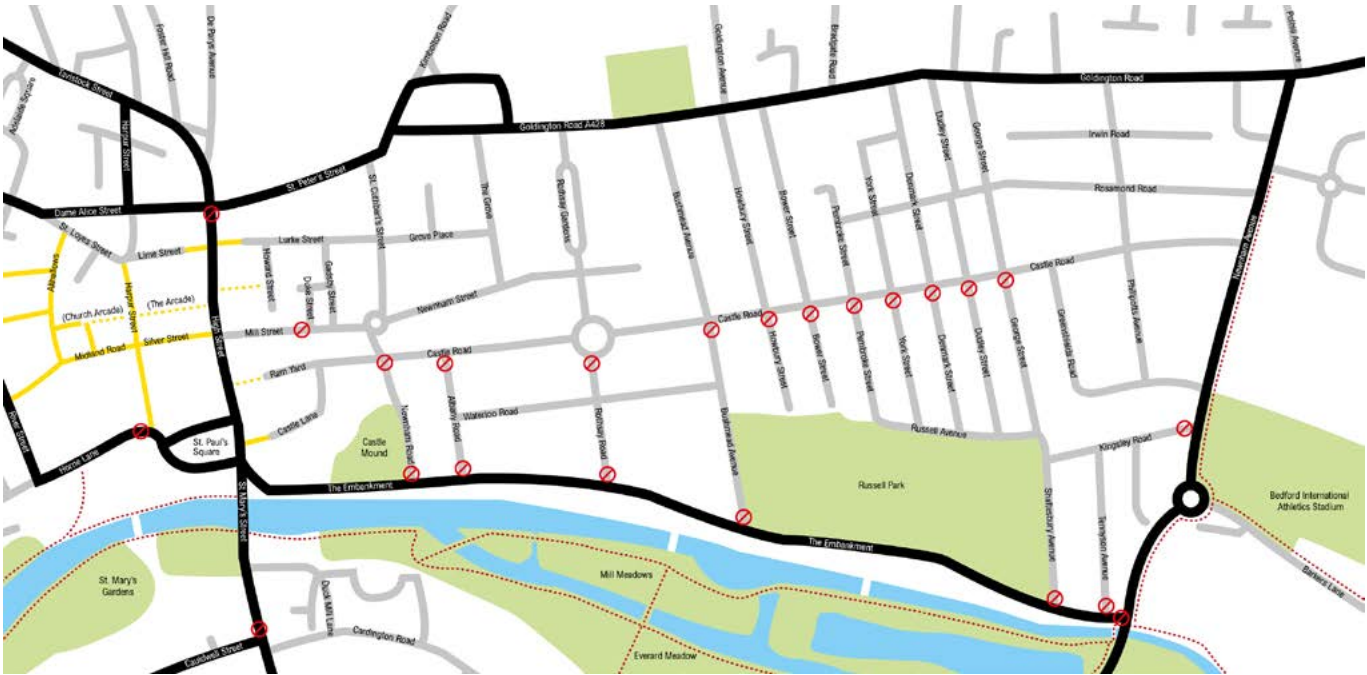
Festival Car Parks sponsored by **Stagecoach**



Road Closures

Please be aware of the many road closures that will be in place to allow the Bedford River Festival to happen – please see map below. We ask that if you are attending the event you are considerate of local residents and park in official car parks. Please note that the following roads will be ‘residents only’ parking:

- Newnham Road
- Albany Road
- Waterloo Road
- Rothsay Road
- Bushmead Avenue (south of Castle Road)
- Howbury Street (south of Castle Road)
- Bower Street (south of Castle Road)
- Pembroke Street (south of Castle Road)
- York Street (south of Castle Road)
- Denmark Street (south of Castle Road)
- Dudley Street (south of Castle Road)
- George Street (south of Castle Road)
- Shaftesbury Avenue
- Kingsley Road
- Tennyson Road
- Beresford Road
- Newnham Avenue (south section)



Park & Ride

20TH & 21ST JULY 2024

Mowsbury Park & Ride (MK41 8AH)



Mowsbury Park & Ride (MK41 8AH) will be running specially for the River Festival.

Stagecoach will be operating from Mowsbury Park, this will be a 15 minute service dropping off and collecting from Bedford town centre (River Street, outside the old Tesco Store).

Mowsbury Park is situated to the north of the Bedford and the access for the Park & Ride will be from Kimbolton Road (B660).



Fares

£5 per adult, £3.50 per child (up to 16yrs),
£12 for a family of up to 2 adults & 3 children (including return).

Free parking.

Normal Stagecoach passes/tickets will not be valid.
Concessionary passes will not be accepted.

Times

Saturday 20th July 2024:

River Street	09:00	then at these mins past each hour	15	30	45	00	until	20:45	21:00	21:15	21:30
Mowsbury Park	09:15		30	45	00	15		21:00	21:15	21:30	21:45
Mowsbury Park	09:20	past each hour	35	50	05	20		21:05	21:20	21:35	21:50
River Street	09:35		50	05	20	35		21:20	21:35	21:50	22:05

River Street	21:45	22:00	22:15	22:30	22:45	23:00
Mowsbury Park	22:00	22:15	22:30	22:45	23:00	23:15
Mowsbury Park	22:05	22:20	22:35	-	-	-
River Street	22:20	22:35	22:50	-	-	-

Sunday 21st July 2024:

River Street	09:00	then at these mins past each hour	15	30	45	00	until	20:45	21:00	21:15	21:30
Mowsbury Park	09:15		30	45	00	15		21:00	21:15	21:30	21:45
Mowsbury Park	09:20	past each hour	35	50	05	20		21:05	-	-	-
River Street	09:35		50	05	20	35		21:20	-	-	-

Additional Information

Extra seats on our key services as far as possible. There will be extra late night services on Sunday 21st July on some of the key town routes which will see journeys on some services running as late as 21:30pm.



For more information, please scan the QR code or visit www.stagecoachbus.com
Set your location to 'Bedford' and details are on the 'Special Events and Promos' tabs.

Elstow Park & Ride (MK42 9FX)



Elstow Park & Ride (MK42 9FX) will be running an enhanced service during the River Festival weekend.

Grant Palmer will be operating a 15 minute service dropping off and collecting from Bedford town centre.

Elstow Park & Ride is located in Progress Park on the A6 - just north of the A6 junction of the A421.



Fares

£2 for anyone, anywhere on any routes.

Free parking.

Concessionary passes can not be used on 744 Elstow P&R services.

Times

Every 15 minutes, from 9:00am until 21:45pm.
The last bus from Bedford to Elstow departs at 22:00pm.

Additional Information

Buses will operate to standard timetables on Saturday 20th July, with no additional services on Sunday 21st July.



Due to festival road closures, services 42, 44, 68, 72, 73 and 74 will terminate at Kingsway, Bedford.
For more information, please scan the QR code or visit www.grantpalmer.com

For all information & stage/activity timings, please scan the QR code with your smart phone to visit our website:

<https://riverfestival.bedford.gov.uk>



Sponsors & Partners

Headline Sponsor:



Premium Activity Sponsors:



Activity Sponsors:



Partner Sponsors:



Friends Sponsors:



Partners of the Bedford River Festival 2024:



The background of the poster features several stylized blue hands and forearms pointing in various directions. Each hand has a white wristband. The hands are positioned around the central text, creating a sense of collective action and vigilance.

IF YOU SEE SOMETHING THAT
DOESN'T FEEL RIGHT
DON'T THINK
SOMEONE ELSE
WILL SORT IT

TELL SECURITY

Let's keep the party going
#BeSafeBeSound

ACT | ACTION
COUNTERS
TERRORISM

Finding out more...

For more information and downloads, please visit the Bedford River Festival website:

 <https://riverfestival.bedford.gov.uk/>

 events@bedford.gov.uk

To find out more about this and other activities going on all year round in Bedford's parks, please follow one of our digital platforms:

 **@BedfordEvents**

 **@bedfordevents**

 **@BedfordEventsUK**

design & print → **DID YOU KNOW...**

WE CREATED THIS BROCHURE, & CAN DO MUCH MORE FOR YOU?

- Posters & Flyers
- Brochures
- Large Posters (up to A0 size)
- Pop-Up Display Stands
- Leaflets
- Vinyl Banners

... literally anything you could want!

> HIGH QUALITY > FAST TURNAROUND > COMPETITIVE RATES >

Call **01234 228154** or email design@bedford.gov.uk

 **BEDFORD BOROUGH COUNCIL**

Design & Print is a department of Bedford Borough Council